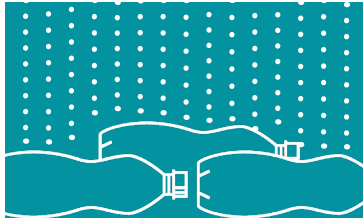




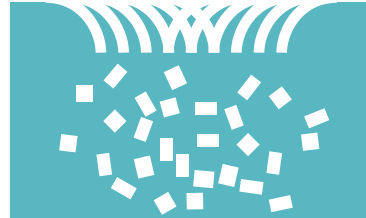
Our range of
stylish rPET
recycled bags
and folders



1 Plastic bottles
are **collected**



2 The bottles
are **cleaned**...



3 ...before being
shredded
into pellets



4 The pellets
are **crushed**
and **melted**



5 The melted
plastic is **spun**
into **thread**...



6 ...which is
made into our
fantastic bags



At end of life,
recycle in
your usual bin

rPET is polyester fabric made from recycled plastic... it's progress in the making